

MODERN ARABIC 7+ BEDROOM MANSION TYPE A



BASEMENT FLOOR
TOTAL AREA 25,871 SQFT

Disclaimer: The trademarks, images and copyright included in this literature may not be used without the express prior written consent of District One FZ. All rights reserved. All reasonable care has been taken in the preparation of this literature and to the best of our knowledge, no relevant information has been omitted on purpose. However, District One FZ and its management, employees, appointment sales and marketing agents disclaim all liability in the event that any information, design, area or matter in this literature differs from the sale and purchase agreement or the actual constructed development or part of the development. None of the information contained in this literature should be reviewed as an offer to sell or as a solicitation to purchase any part of the development. Rather the information contained herein is provided to you as that you can learn and generally familiarise yourself with the development. We reserve our right to make improvements and/or changes to this literature and the information, design or areas contained at any time without notice or obligation.

All measurements, dimensions, coordinates and drawings given as the floor plans in this literature are approximate and provided only for the purpose of marketing, illustration, information and general guidance as such drawings are not to scale. All the rooms, swimming pool, sizes, locations, orientations, dimensions, fixtures, fittings, finishes and specifications (including materials, placement, size of rooms, windows, doors, balcony, furniture, inbuilt wardrobe etc.) provided in the floor plans may vary as the same have been taken from concept designs prior to the actual development/construction and therefore their accuracy in relation to actual construction cannot be confirmed. Hence, we make no guarantee, warranty or representation as to the accuracy and completeness of the floor plan information as changes may be made during the development process, without notice. Always refer to the latest IFC design available in the sales office for the most accurate representation of all construction details.

MODERN ARABIC 7+ BEDROOM MANSION TYPE A

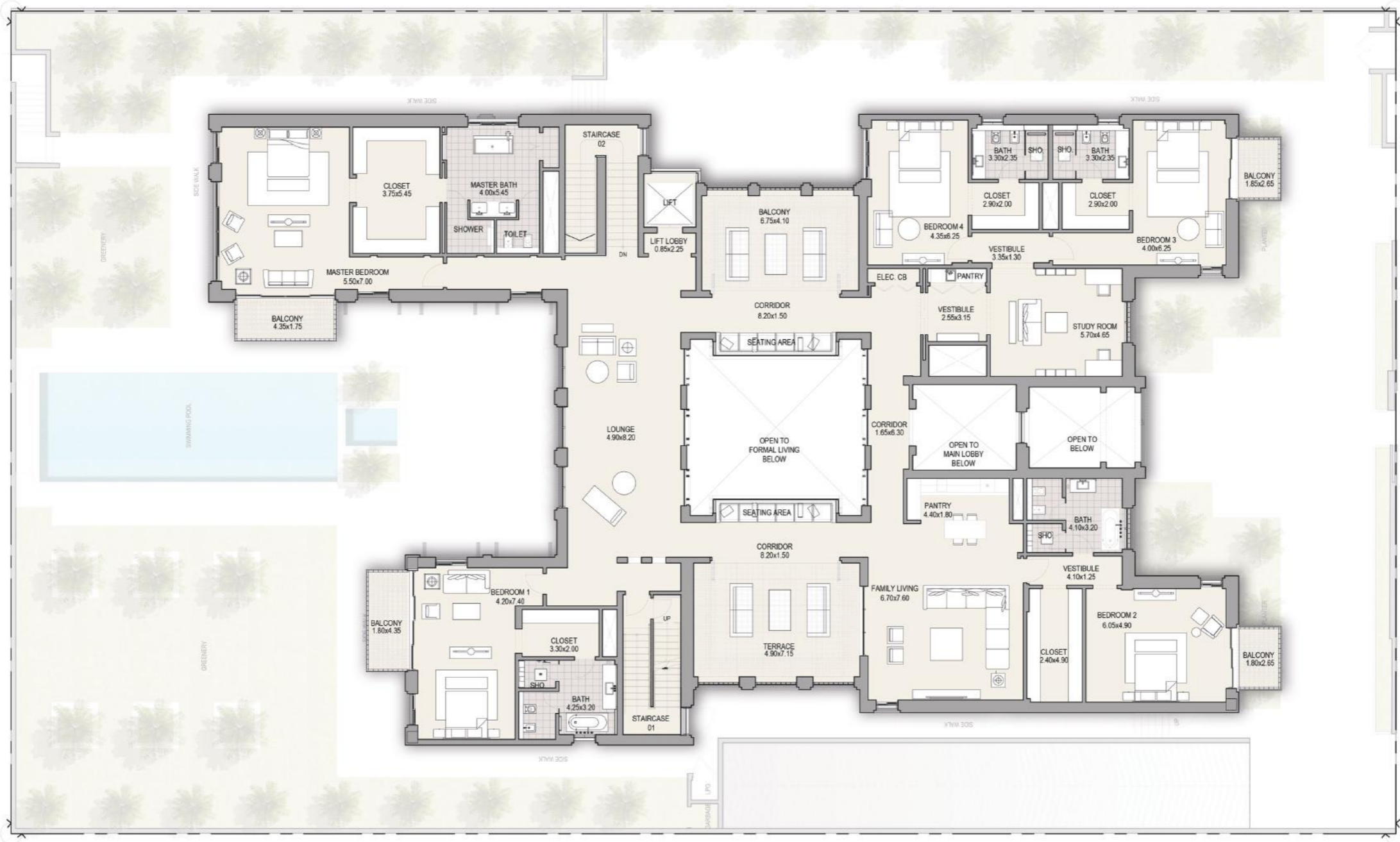


GROUND FLOOR
TOTAL AREA 25,871 SQFT

Disclaimer: The trademarks, images and copyright included in this literature may not be used without the express prior written consent of District One FZ. All rights reserved. All reasonable care has been taken in the preparation of this literature and to the best of our knowledge, no relevant information has been omitted on purpose. However, District One FZ and its management, employees, appointment sales and marketing agents disclaim all liability in the event that any information, design, area or matter in this literature differs from the sale and purchase agreement or the actual constructed development or part of the development. None of the information contained in this literature should be reviewed as an offer to sell or as a solicitation to purchase any part of the development. Rather the information contained herein is provided to you as that you can learn and generally familiarise yourself with the development. We reserve our right to make improvements and/or changes to this literature and the information, design or areas contained at any time without notice or obligation.

All measurements, dimensions, coordinates and drawings given as the floor plans in this literature are approximate and provided only for the purpose of marketing, illustration, information and general guidance as such drawings are not to scale. All the rooms, swimming pool, sizes, locations, orientations, dimensions, fixtures, fittings, finishes and specifications (including materials, placement, size of rooms, windows, doors, balcony, furniture, inbuilt wardrobe etc.) provided in the floor plans may vary as the same have been taken from concept designs prior to the actual development/construction and therefore their accuracy in relation to actual construction cannot be confirmed. Hence, we make no guarantee, warranty or representation as to the accuracy and completeness of the floor plan information as changes may be made during the development process, without notice. Always refer to the latest IFC design available in the sales office for the most accurate representation of all construction details.

MODERN ARABIC 7+ BEDROOM MANSION TYPE A



FIRST FLOOR
TOTAL AREA 25,871 SQFT

Disclaimer: The trademarks, images and copyright included in this literature may not be used without the express prior written consent of District One FZ. All rights reserved. All reasonable care has been taken in the preparation of this literature and to the best of our knowledge, no relevant information has been omitted on purpose. However, District One FZ and its management, employees, appointment sales and marketing agents disclaim all liability in the event that any information, design, area or matter in this literature differs from the sale and purchase agreement or the actual constructed development or part of the development. None of the information contained in this literature should be reviewed as an offer to sell or as a solicitation to purchase any part of the development. Rather the information contained herein is provided to you as that you can learn and generally familiarise yourself with the development. We reserve our right to make improvements and/or changes to this literature and the information, design or areas contained at any time without notice or obligation.

All measurements, dimensions, coordinates and drawings given as the floor plans in this literature are approximate and provided only for the purpose of marketing, illustration, information and general guidance as such drawings are not to scale. All the rooms, swimming pool, sizes, locations, orientations, dimensions, fixtures, fittings, finishes and specifications (including materials, placement, size of rooms, windows, doors, balcony, furniture, inbuilt wardrobe etc.) provided in the floor plans may vary as the same have been taken from concept designs prior to the actual development/construction and therefore their accuracy in relation to actual construction cannot be confirmed. Hence, we make no guarantee, warranty or representation as to the accuracy and completeness of the floor plan information as changes may be made during the development process, without notice. Always refer to the latest IFC design available in the sales office for the most accurate representation of all construction details.